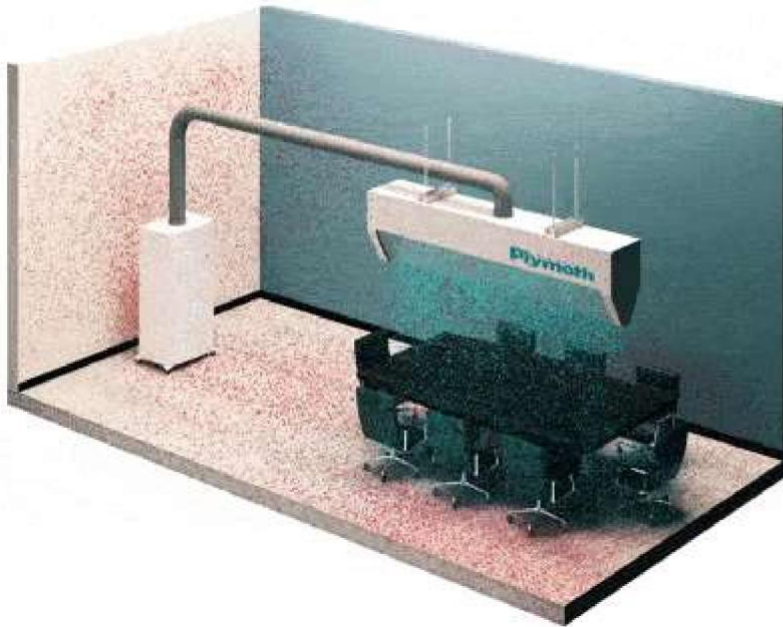


## Plymoth VBF “Superior 2-Zone” Airpurifier.

For *Coffee-, Lunch- and Meeting Rooms*. “Plug and Play” Product. HEPA H14 Filter.



**10-times as efficient in cleaning the Air around the Table.**

### How it works!

The Plymoth Superior 2-Zone HEPA H14 Filter Unit cleans the Air in the Room (Zone 1) and distributes it continuously over the Table (Zone 2). The 99.995% cleaned Air creates immediately a “Clean Air Room” at the Table. All the Air in the room is changed 6 times/hour. After a short While a 98-99% Reduction of the Virus and Bacteria is achieved in the rest of the Room.

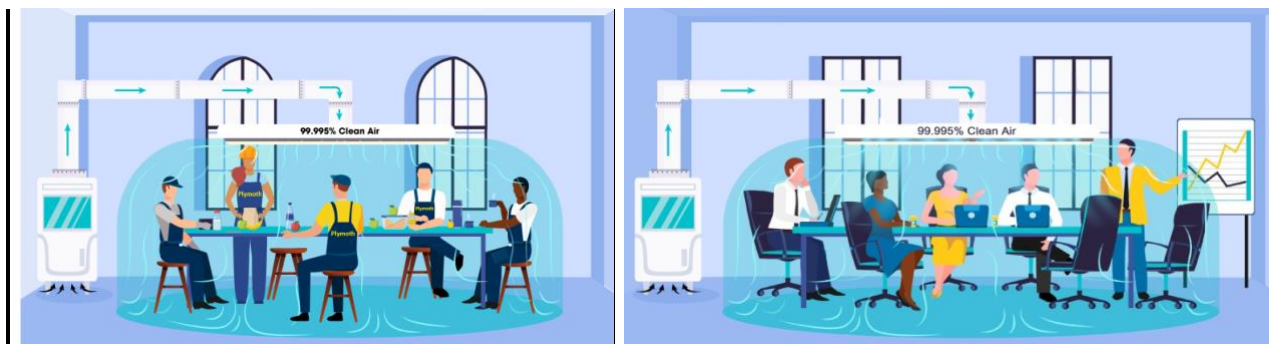
By just having a normal conversation aerosolized virus and bacteria remain in the air for long periods. This can transmit severe colds and Corona virus. Plymoth “Superior 2-Zone” reduces that risk substantially. The Zone over and around a table for 6-8 people is around 10m<sup>3</sup>. That means that the air is totally changed at the table every minute already with the VBF-700 filter unit. The risk of being infected by Virus and Bacteria will decrease.

To distribute the cleaned air into the middle of the room also positively affects the time it takes to change all the air in a room. A filter unit which stays along a wall takes longer time to “catch” the air which is far away from it.

The effectiveness of the specially developed Superior 2-Zone Diffusion Hood comes from the combination of Laminar- and Temperature controlled airflow. The air is extracted close to the floor where the temperature is somewhat lower than at the level where the Diffusion Hood is letting out the cleaned air. The cleaned air is distributed over the table with help of the fan in the VBF filter unit and because colder air tends to descend. This means that you can control the air volume to avoid any draft and still have the airflow evenly distributed over the table.

# ORIGINAL<sup>®</sup> Plymoth

**One Week less sick Leave per Year and Employed, will in less than a year pay back the investment in the Plymoth “Superior 2-Zone” H14 Airpurifier.**



The VBF Superior 2-Zone Filters Unit comes in two sizes. 700m<sup>3</sup>/h and 1000m<sup>3</sup>/h maximum airvolume. It is recommended to filter the total air volume in a room 6 times/hour. The 700m<sup>3</sup>/h is for rooms up to 50m<sup>2</sup>/2.5m high. The 1000m<sup>3</sup>/h is for rooms up to 60m<sup>2</sup>.

All VBF Airpurifiers are designed with 1-phase, 220V EC motors. Just plug it in. The noise level is already very low at maximum airflow. It is easy to regulate the speed of the fan down to levels where you hardly hear it.

The 2-Zone Diffusion Hood comes in 4 sizes: 1m (2 persons), 1.5m (4 persons), 2m (6 persons) and 2.5m (8persons). We recommend the same length of the Diffusion Hood as the length of table.

The Horizontal Duct Work is complete with Duct, Bends, Suspension Chains and Hooks. You just need to decide how far it is from where you will place the filter unit to the middle of the table. See drawing below.

The complete duct kit and Hood can be installed in a short time without the need of skilled workers. The Filter Unit is just to plug in.



**For your safety we only use HEPA H14 filter with *Certificate and Leak Test*. The efficiency is more than 99.995% on Virus and Bacteria under/over 0.16 micrometer (down to 0.01 micrometer). The Filters are made in Europe by a HEPA filter specialist.**

Choose the right combination.

Filter Unit, Duct Work and Diffusion Hood.



Alu Gray



Ocean Blue

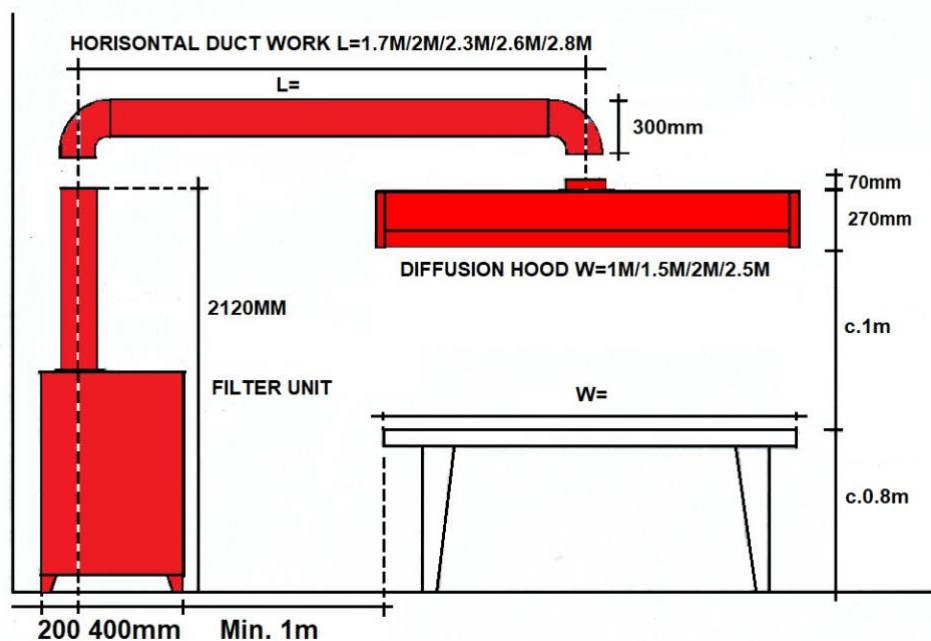


Mahogany



Gray Black

Recommended color combinations.



To choose the right combination of Filter Unit, Duct Work and Diffusion Hood follow step 1-3 below.

1. FILTER UNIT. VBF-700 for rooms up to 50m<sup>2</sup>. VBF-1000 for rooms up to 70m<sup>2</sup>.
2. HORISONTAL DUCT WORK. Measure the L=..... as is shown in the drawing above.  
If you need longer Horizontal Duct than 2.8m you can combine it with "Horizontal Extension Duct" 0.6m/0.8m/1.1m.
3. DIFFUSION HOOD. Decide length W= ..... We recommend the same length as the table.

All Plymoth Products are of Highest Quality-Developed and Made in Sweden.



**Choose one of the possible Colors specified after the Product number.  
For example P00830-AG, when you order.**



**WH=White AG=Alu Grey OB=Ocean Blue MB=Mahogany BE=Beige GB=Grey Black**

	Product Number
<u>FILTER UNIT. VBF-700/2-Zone HEPA H14 (8M2). Vertical Duct D.200/1.1m. 4x125mm Legs. EC 1-phase, 220V, 50Hz, 175W. 520x580x1065mm+1100mm Vertical Duct.</u>	<u>P00830-AG/OB/MB/GB</u>
<u>FILTER UNIT. VBF-1000/2-Zone HEPA H14 (13M2). Vertical Duct D.200/0.8m. 4x125mm Legs. EC 1-phase, 220V, 50Hz, 350W. 520x580x1300mm+800mm Vertical Duct.</u>	<u>P00831-AG/OB/MB/GB</u>
<u>DIFFUSION HOOD 1m (2 Persons). Inlet D.200, Suspension Chains 4x2m and 4+4 Hooks.</u>	<u>P00818-AG/OB/MB/GB</u>
<u>DIFFUSION HOOD 1.5m (4 Persons). Inlet D.200, Suspension Chains 4x2m and 4+4 Hooks.</u>	<u>P00818-AG/OB/MB/GB</u>
<u>DIFFUSION HOOD 2m (6 Persons). Inlet D.200, Suspension Chains 4x2m and 4+4 Hooks.</u>	<u>P00818-AG/OB/MB/GB</u>
<u>DIFFUSION HOOD 2.5m (8 Persons). Inlet D.200, Suspension Chains 4x2m and 4+4 Hooks.</u>	<u>P00818-AG/OB/MB/GB</u>
<u>HORIZONTAL DUCT WORK. L=1.6m. 2 Bends 90/D.200mm, Duct D.200mm (0.6m+0.6m), Suspension Chains 4x2m and 2+2 Hooks.</u>	<u>P00900-WH/BG/GB</u>
<u>HORIZONTAL DUCT WORK. L=2m. 2 Bends 90/D.200mm, Duct D.200mm (0.8m+0.8m), Suspension Chains 4x2m and 2+2 Hooks.</u>	<u>P00824-WH/BG/GB</u>
<u>HORIZONTAL DUCT WORK. L=2.3m. 2 Bends 90/D.200mm, Duct D.200mm (1.1m+0.8m), Suspension Chains 4x2m and 2+2 Hooks.</u>	<u>P00825-WH/BG/GB</u>
<u>HORIZONTAL DUCT WORK. L=2.6m. 2 Bends 90/D.200mm, Duct D.200mm (1.1m+1.1m), Suspension Chains 4x2m and 2+2 Hooks.</u>	<u>P00826-WH/BG/GB</u>
<u>HORIZONTAL DUCT WORK. L=2.8m. 2 Bends 90/D.200mm, Duct D.200mm (0.8m+0.8m+.8m), Suspension Chains 4x2m and 2+2 Hooks.</u>	<u>P00827-WH/BG/GB</u>
<u>HORIZONTAL EXTENSION DUCT. L=0.6m/D.200mm, Male Coupling D.200mm, Suspension Chains 2x2m and 2+2 Hooks.</u>	<u>P00836-WH/BG/GB</u>
<u>HORIZONTAL EXTENSION DUCT. L=0.8m/D.200mm, Male Coupling D.200mm, Suspension Chains 2x2m and 2+2 Hooks.</u>	<u>P00837-WH/BG/GB</u>
<u>HORIZONTAL EXTENSION DUCT. L=1.1m/D.200mm, Male Coupling D.200mm, Suspension Chains 2x2m and 2+2 Hooks.</u>	<u>P00838-WH/BG/GB</u>
<u>REPLACEMENT FILTER G4 for all VBF-700 Models. 457x457x50mm.</u>	<u>P00800</u>
<u>REPLACEMENT FILTER G4 for all VBF-1000 Models. 457x457x100mm.</u>	<u>P00801</u>
<u>REPLACEMENT FILTER HEPA H14 (8M2) for all VBF-700 Models. 457x457x100mm. With Certificate and Leak Tested.</u>	<u>P00802</u>
<u>REPLACEMENT FILTER HEPA H14 (13M2) for all VBF-1000 Models. 457x457x150mm. With Certificate and Leak Tested.</u>	<u>P00803</u>